

Tenementality

© 2015 Tenement Administration Services Pty Ltd

June 2015

[Volume 1, Issue 1]

New DMP Reporting “Guidelines” published Let Report Writer Beware!

We all know that in WA, if

“a report is not submitted by the due date the holder of the tenement(s) may incur a fine, or the tenement(s) may be forfeited.”

In addition, where requests for missing data are not satisfied within 30 days, forfeiture proceedings may be instituted, and if

“Forfeiture proceedings have commenced on a

Even if your report is up-to-date, comprehensive, and not late, it can still be subject to forfeiture action simply if the content is considered to be not in conformance with the Guidelines.

But did you know that if

“a report does not comply with the guidelines the holder of the tenement(s) may incur a fine, or the tenement(s) may be forfeited.”!!

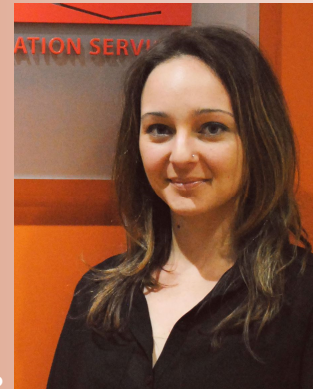
On 18 May 2015 the WA DMP released its new 47-page Final Draft “Guidelines” for the submission of Mineral Exploration Reports, but the operation of s.115A(3) of the Mining Act 1978 makes it clear that strict compliance with such “guidelines” is mandatory.

tenement, a fine in lieu of forfeiture will be incurred even if a report is subsequently submitted.”

With the WADMP now forfeiting tenements following rent payments which are only two days late, TAS believes that clients should pay particular attention to these new requirements.

For advice in relation to these new requirements contact Amanda Smith or Jenny Johnson on (08) 9421 1777

Karolina Centkowski



TAS is delighted to welcome [Karolina Centkowski](#) to the Brisbane Team.

Karolina holds degrees in both Geology and Anthropology, and has several years’ experience working in senior positions in the Queensland Government Native Title Division. Karolina will specialise in geological submissions and programmes for TAS.

Karolina strengthens TAS’ current geological team of [Jay Evans-Wheeler](#) (Brisbane) and [Michael Davie-Smythe](#) (Melbourne).

Western Australia – DMP policy on Mining Lease exemptions

Beware the fine print!

And still on the subject of Western Australia, tenement holders applying for five year exemptions from expenditure on Mining Leases must now be aware of the geographical location of their resource within their projects.

No longer will it be enough to demonstrate a single JORC-compliant resource located over several adjacent Ms. The holder must now demonstrate that a substantive, JORC-compliant, resource must be located on each tenement for which the exemption sought, to enable the five year exemption to be granted.

Holders should brief staff and consultants that a single resource estimate is (whilst operationally reasonable) not sufficient, and breakdowns by individual tenement must be requested for any JORC estimation as part of any assessment to prevent the need and expense of “reinvention of the wheel” at a later date to save or suspend a valuable project.

For specialist expert advice in relation to exemption matters, please contact:

Jay Evans-Wheeler or Jenny Johnson on (08) 9421 1777 or your local TAS Office at www.landadmin.com.au

This month's featured office:

***Tenement Administration Services Pty Ltd
LEVEL 4, 345 ANN STREET BRISBANE QLD 4000
Tel: (07) 3012 7503 | Fax: (07) 3211 0424
www.landadmin.com.au***

Please call or email: tasbris@landadmin.com.au

TAS was established in 1980 and has since grown into the industry leader in the field of tenement management and administration. The company's offices in **Melbourne, Perth, Brisbane** and **Maitland** are responsible for managing land and tenements throughout **Australia, Asia** and **Africa**.

TAS specialises in both the day-to-day and complex administration of mining tenements on a contract basis throughout Australia, and, via its associates, throughout the world

With combined professional careers well in excess of 100 years, including experience in all Australian Mines Departments, the principals, consultants and employees of **TAS** possess unique expertise in the mining industry and the government administration of the mining, mineral processing and oil and gas industries.

© 2015 Tenement Administration Services Pty Ltd. All rights reserved